

## No. 220USB-P1EB Rechargeable Ball-Grip Screwdriver PLUS



220USB-P1EB



USB Charging Cable(USB Type-C/1m)

\*When using the AC adapter, portable charger, or others, please choose the output 5V-1A type.

Outer Ctn.: 5 sets

Code No.	Model No.	Accessories	JAN(4907587)
148529	220USB-P1EB	Bit: $\Phi$ 2 (90mm) USB Charging Cable (1m)	033666

Package Size: H250 x W105 x D75 (mm)

Specifications	
Rated voltage	3.6V DC
Capacity	800mAh
No-load speed	【LO】280rpm 【MID】340rpm 【HI】400rpm
Output torque (Electric power, Max.)	【LO】1.2N-m 【MID】1.6N-m 【HI】2.0N-m
Endurance Torque (Manual, Max.)	12 N-m
Weight (not including accessories)	170g
Ambient temperature range*	during charging 0°C~+40°C during operation* and storage 0°C~+45°C
Built-in battery	Li-Ion
Number of battery cells	1
Charging time	Approx. 60 min.
Number of charges**	Approx. 500 charges
Charging port	USB Type-C
Input voltage (max.)	5V DC
Input current	1A

\*Do not charge, use, or store the product at ambient temperature 0°C or less.

\*\*Actual battery life will vary depending on operating conditions and environments.

## No. SC-W90 Anti-drop cord



### For safety of working at high spaces.

#### Anti-drop cord

No.SC-W90K/R/B/D

- Natural length: approx. 90cm ~ max. extension: approx. 160cm.
- Mounting weight 1kg or less.
- "Strap type" easy to put through the hole.
- "Anti-spreading shape" to prevent snagging.
- 4 colors (black/red/blue/OD) to choose, according to your preference.
- High-strength, high-elasticity aramid fiber is used for the strap.
- Double-layered structure allows you to see the damage to the cord by color.

\*Cannot be used with the 220USB-1EB or the 220USB-S1EB.

\*Model No.SC-90R in the photo.



Code No.	Model No.	Color	OAL (mm)	Max. extension (mm)	Materials	Single unit size (mm)	SPQ (pcs.)	JAN (4907587)
125581	SC-W90K	Black	Approx. 440	Approx. 1600	Strap cord : Aramid fiber Rubber cord : Polyester, Polyurethane	300x48x55	10	030634
125582	SC-W90R	Red				300x48x55	10	030641
125583	SC-W90B	Blue				300x48x55	10	030658
125584	SC-W90D	OD				300x48x55	10	030665

### ⚠ Cautions

- Be sure to read the instruction manual of the rechargeable screwdriver.
- Be careful of short-circuit and electric shock when working with electricity.
- Overloading may cause damage to the product or screws, or injury.
- Keep this product away from children at home.

## VESSEL Co., Inc.

17-25, Fukae-Kita 2-chome, Higashinari-ku, Osaka 537-0001 JAPAN  
Tel:+ 81 (0)6 6976 7778 Fax:+ 81 (0)6 6972 9441  
E-mail:export@vessel.co.jp URL : www.vessel.co.jp/english/

### VESSEL EUROPE

contact@vessel-europe.com  
www.vessel-europe.com

#### Distributed by

25042521.005

●Subject to change of the specifications, dimensions, and others, without prior notice.

# The next stage of Electric X Manual Screwdriver!



ELECTRIC & MANUAL DRIVEN

# 220USB +PLUS



Made in Japan



# One single screwdriver with 3 modes of rotation and torque. The 220USB-P1EB is now available!!

Rechargeable Ball-Grip  
Screwdriver PLUS  
No.220USB-P1EB

**4 features**  
that represent the next era  
of USB screwdrivers.

## Mode switching button/ Recharging lamp

Three modes can be switched by pressing the button on the body.  
The optimum rotation speed and torque can be selected according to the application.  
Also, when charging the battery, the light turns red during charging and green when charging is complete.

### Modes switchable

- Low-speed blinking (5 times) : 280 rpm (1.2 N-m)
- High-speed blinking (10 times) : 340 rpm (1.6 N-m)
- On (5 seconds) : 400 rpm (2.0 N-m)



Press the switch long for about 1 second, and the mode switches.

**3.6v**  
800mAh **Li-ion**  
Battery

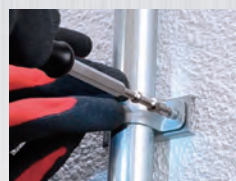
Mode switching button/  
Recharging lamp

## Applications according to the 3 modes



**280 rpm at 1.2 N-m**  
for terminal block  
work!

[Low-speed] is for  
easily damaged parts  
such as electronic  
terminal blocks.



**340 rpm at 1.6 N-m**  
for general work!

[Medium speed]  
reducing backlash,  
suitable for work with  
the terminal block for  
the distribution board  
and general work.



**400 rpm at 2.0 N-m**  
for drywall screws  
and long screws!

[High-speed] is for  
tightening work that  
requires high rotation  
speed and torque.

## Specifications comparison

	220USB-P1EB PLUS			220USB-1EB Standard	220USB-S1EB Hi-Speed
	LO	MID	HI		
Speed	<b>280</b> rpm	<b>340</b> rpm	<b>400</b> rpm	<b>280</b> rpm	<b>1200</b> rpm
Max. Output Torque (Electric)	<b>1.2</b> N-m	<b>1.6</b> N-m	<b>2.0</b> N-m	<b>2.0</b> N-m	<b>0.4</b> N-m
Max endurance torque (Manual)	<b>12</b> N-m			<b>10</b> N-m	<b>10</b> N-m
Weight	<b>170</b> g			<b>160</b> g	<b>160</b> g
Dimensions					
Charging port	USB Type-C			Micro USB Type-B	Micro USB Type-B
Anti-drop lanyard attachment hole	Available			N/A	N/A

Sliding switch  
Anti-slip elastomer.

High brightness  
**LED**

High brightness  
LED light

Reinforced gear structure  
+ Front housing adopted.

The front housing and reinforced gears, which prevent distortion of the body during use, have improved durability compared to conventional products. The maximum endurance torque during manual operation has also been increased to 12 N-m

Reinforced gears + Front housing  
**20% improved strength**



Front housing



USB Type-C  
charging port

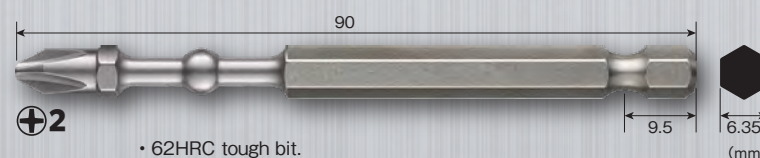
6.35  
mm



Bit chuck

Compatible with double end bit  
and single end bit.

IMPACT BALL Torsion Bit (1 pc.)



- 62HRC tough bit.
- Shock absorption at the ball torsion part.



Anti-drop lanyard  
attachment hole

No confusion even  
when charging.

**USB Type-C**



Prevent the accidental drop.

**Anti-drop lanyard**  
can be attached.

