

New

Air Nipper Round-Type ADV No.GT-NR20A Booster Unit No.P-20A



GT-NR20A+P-20A

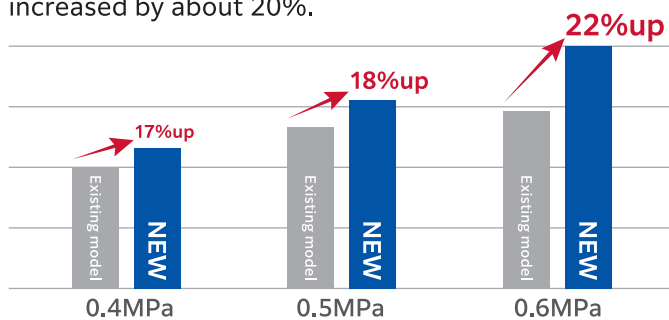
GT-NR20A

Meeting the recent demands for a variety of gate cutting!

Newly developed from the market requests.

About 20% more powerful than the existing model.

Compared to the GT-NR20, the pressurized force is increased by about 20%.



Dimensions are same as the existing model.

It is easy to replace the existing model with this new product.

Corresponding to the trend of hardening of the resin products and the larger diameter of the gate, without changing the current jig.

The N20 blades can be used.

The existing N20 blades can also be used.

NOTE: Since the internal structure of this new nipper is different from the existing model, parts are not interchangeable between them. Also, some custom-made blades may have insufficient blade opening or premature wear.

Scale is a convenient reference when using with the stand.

The scale is printed by a laser on the lateral side. Convenient for installation.

Booster unit also available.

Dedicated option for the demand of more powerful cutting force.

By mounting to the GT-NR20A, the pressurized force is even further increased by about 20%, compared to the existing model.

Recommended to the following cases:

- ▶ You want to make the nipper **as light as possible** without using a pressure booster unit.
- ▶ The cutting capacity of the current model is **a little insufficient**.
- ▶ The N30 type would be appropriate, but could not be used **due to space limitations**.
- ▶ The cutting capacity is sufficient, but **the air pressure needs to be lowered**.
- ▶ Applications that **require pressurization**, such as crimping, punching, bending, etc.

Model No.	Weight (g)	Air consumption (cm³/str.)	Operating air pressure (MPa)	RoHS
GT-NR20A	269.5	262	0.4~0.6	✓
P-20A	164	538*	~0.5	✓

Weight compared to the existing model: 10.5g less (the GT-NR20A), 10.5g less (the P-20A)
Air consumption is at 0.6MPa.

* Air consumption of P-20 is when GT-NR20 is used with.

Air Nipper Round-Type ADV No.GT-NR20A Booster Unit No.P-20A

New

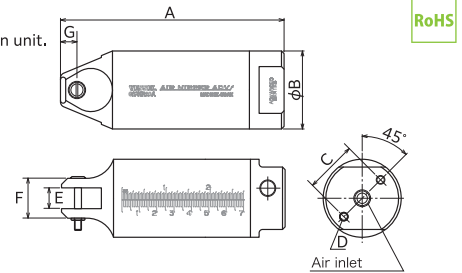
VESSEL

Think Solutions!

Air Nipper Round-Type ADV without Safety Lever *New*

GT-NR20A

- The nipper that has about 20% more pressurized force than the existing NR series.
- Scale is on the lateral side.
- The air inlet position can be adjusted 180 degrees, so it can be changed freely according to the mounting position of the main unit.
- Blades are OPTION.



Reference

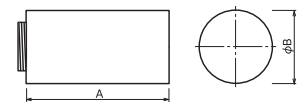
Capacity ϕ (mm)				Code No.	Model No.	Size (mm)							Air Consumption ($\text{cm}^3/\text{str.}$)	Air Pressure (MPa)	Weight (g)	Hose Coupling	JAN (4907587)
Soft Plastic	Hard Plastic	Copper Wire	Steel Wire			A	B	C	D	E	F	G					
8.0	5.5	3.0	2.4	360027	GT-NR20A	129	45	30	M5 Depth 12	12	23	9.5	262	0.4~0.6	269.5	Rc 1/8	034700

※The capacity is for reference only when mounting a standard blade. Subject to the blade type and the material of the product to cut.
 ※Make sure in advance of the product dimensions for installation to dedicated or automated machine. (Frame outer dimension, screw size, distance between screws, etc.)
 ※Working air hose inner dia.: 5mm ※Overall length and Weight: Accessories not included.

Booster Unit *New*

P-20A

- The booster unit that has about 20% more pressurized force than the existing P series.
- For the application that the originally required pressure cannot be obtained because of the limit of the space and the air pressure.



Reference

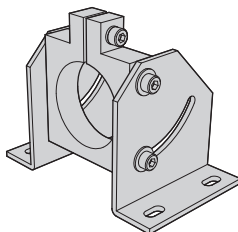
Capacity ϕ (mm)				Code No.	Model No.	Size (mm)		Air Consumption ($\text{cm}^3/\text{str.}$)	Air Pressure (MPa)	Applicable Nipper	Weight (g)	JAN (4907587)
Soft Plastic	Hard Plastic	Copper Wire	Steel Wire			A	B					
9.0	6.5	3.4	2.6	360055	P-20A	87	45	538*	~0.5	NR20A	164	034717

※The capacity is for reference only when mounting a standard blade. Subject to the blade type and the material of the product to cut.
 When this is mounted, the total length and the weight will be the sum of the one of the GT-NR20A and the P-20A.

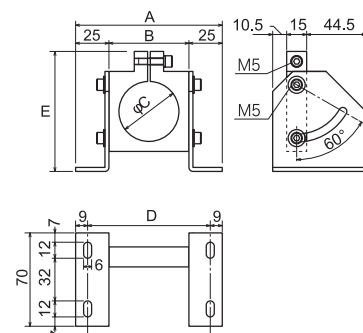
Stand for GT-NR

NR20ST

- Fixture for direct gate sprue cutting and for mounting to automatic machine.
- Mounting angle can be adjusted (0~60°).



Mounting example



Code No.	Model No.	Size (mm)					Applicable Models	Weight (g)	JAN (4907587)
		A	B	C	D	E			
360058	NR20ST	110	60	45	92	290	NR20A/NR20	385	308931

⚠Cautions

- Do not touch the blade.
- Always wear protective goggles and earplugs when working with the product.
- When installing or replacing blades or the nipper, be sure to shut off the power source.
- Do not use the product if any abnormality such as cracks, chipping, abrasion, or deformation is found.
- Do not use the product in which electricity is running.
- The product may cause vibration.
- Do not modify the product.

VESSEL Co., Inc.

17-25, Fukae-Kita 2-chome, Higashinari-ku, Osaka 537-0001 JAPAN
 Tel: +81(0)6 6976 7778 Fax: +81 (0)6 6972 9441
 URL: www.vessel.co.jp/english E-mail: export@vessel.co.jp

VESSEL EUROPE

contact@vessel-europe.com
 www.vessel-europe.com

Distributed by

24000000.00

●Specifications, dimensions, and others may be subject to change without prior notice.