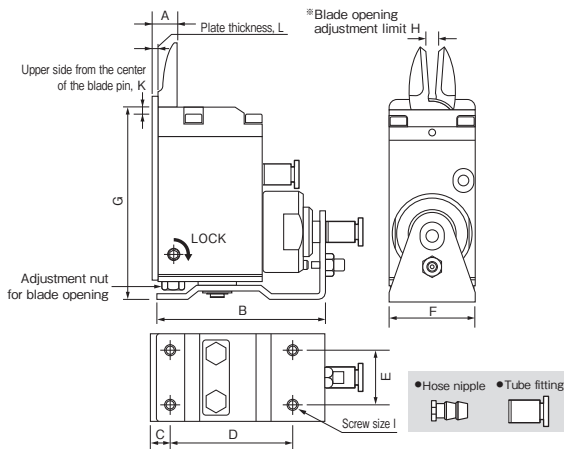


**No. GT-NT03/05/10/20 Sliding Air Nippers Vertical-type**

- Blade opening is adjustable, and fine adjustments are easy to make after mounting the nippers, ensuring clean, unblemished cut surfaces.
- Blade can be installed either with the cutting edge outside or inside.



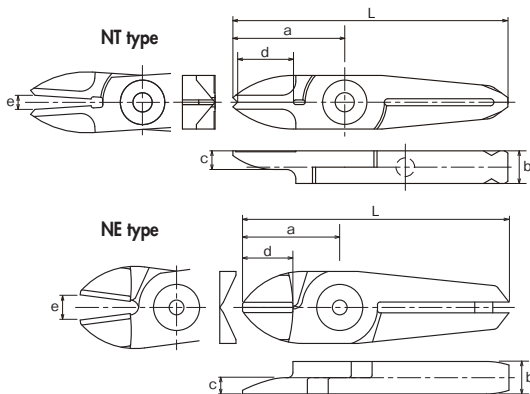
**Reference**

Capacity φ (mm)		Model No.	Size (mm)										Air Consumption (cm <sup>3</sup> /str.)	Weight (g)	Slide Distance (mm)	Hose Port	EDP No.	
Soft Plastic	Hard Plastic		A	B	C	D	E	F	G	H	I	J						K
1.5	1.0	GT-NT03												27	178	Pull 0~3	W/hose nipple	360601
1.5	1.0	GT-NT03R												27	178	Push 0~3	Hose I.D φ2.5mm	360611
1.5	1.0	GT-NT03-4	9	62	7	43	14	19	68.1	1.5~3	M3	2	5	27	178	Pull 0~3	W/tube fitting	360621
1.5	1.0	GT-NT03R-4												27	178	Push 0~3	Hose I.D φ2.5×O.D. φ4mm	360631
2.5	1.5	GT-NT05												47	325	Pull 0~3	W/hose nipple	360602
2.5	1.5	GT-NT05R												47	325	Push 0~3	Hose I.D φ2.5mm	360612
2.5	1.5	GT-NT05-4	9	64	7	45	20	32	71.1	3~6	M4	2	5	47	325	Pull 0~3	W/tube fitting	360622
2.5	1.5	GT-NT05R-4												47	325	Push 0~3	Hose I.D φ2.5×O.D. φ4mm	360632
3.5	2.3	GT-NT10												82	515	Pull 0~3	W/hose nipple	360603
3.5	2.3	GT-NT10R												82	515	Push 0~3	Hose I.D φ2.5mm	360613
3.5	2.3	GT-NT10-6	11	73	8	53	24	38	88.1	4~7	M4	2	5	82	515	Pull 0~3	W/tube fitting	360623
3.5	2.3	GT-NT10R-6												82	515	Push 0~3	Hose I.D φ4×O.D. φ6mm	360633
5.0	3.4	GT-NT20												203	930	Pull 0~8	W/hose nipple	360604
5.0	3.4	GT-NT20R												203	930	Push 0~8	Hose I.D φ4mm	360614
5.0	3.4	GT-NT20-6	14	103	10	80	28	44	102.1	4.5~9	M5	2	6	203	930	Pull 0~8	W/tube fitting	360624
5.0	3.4	GT-NT20R-6												203	930	Push 0~8	Hose I.D φ4×O.D. φ6mm	360634

\*Capacity indication shows the reference value when a standard blade is mounted. Values vary depending on the blade shapes and type of cut objects.  
 \*Blade opening adjustment limit (H) is the dimension adjusted for standard blade (AJ type). \*Air Pressure:~0.4~0.5MPa (NT20 type: 0.5~0.6)

**No. AJ/AJH/AJB Straight blades for plastic**

- Plastic** **AJ**/This is a set of vertical blades with an unbeveled cutting edge. This can cut a gate of molded objects vertically and straight.  
**AJH**/This has a brazed high-speed steel chip suitable for cutting hard plastic.  
**AJB**/This has a brazed carbide chip used for cutting hard plastic or plastic containing glass fiber. Improved durability.



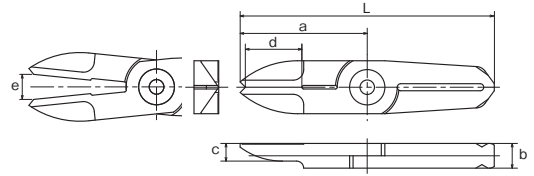
Model No.	Size (mm)							Weight (g)	Material	Applicable models	EDP No.
	a	b	c	d: Effective Length	e: Blade opening	L	L'				
NT03AJ	24	7	4	11	3	59	20	Special alloy steel	GT-NT03 type	360511	
NT05AJ	29	7	5	15	6	65	30	Special alloy steel		360512	
NT05AJH	29	7	5	15	6	65	30	High Speed Steel	GT-NT05 type	360534	
NT05AJB	29	7	5	15	6	65	30	w/Carbide chip		360515	
NE5AJ	24	7	3.5	12	6	60	35	Special alloy steel		360184	
NT10AJ	35	9	6	17	7	82	62	Special alloy steel	GT-NT10 type	360513	
NT10AJH	35	9	6	17	7	82	76	High Speed Steel		360539	
NT10AJB	35	9	6	17	7	82	76	w/Carbide chip		360518	
NE10AJ	27	9	4.5	12	7	74	70	Special alloy steel		360185	
NT20AJ	40	12	6	20	9	97	120	Special alloy steel	GT-NT20 type	360514	
NT20AJH	40	12	6	20	9	97	120	High Speed Steel		360544	
NT20AJB	40	12	6	20	9	97	120	w/Carbide chip		360543	

>> For guidance on cutting capability, see P264 of the technical material.

\*Subject to change in the blade tip specifications (NE types remain same). See P204.

**No. AJL** Straight long blades for plastic

**Plastic** **AJL**/This is a long type set of straight blades. This is useful when there is distance between the nipper and the gate cut portion of the molded object.



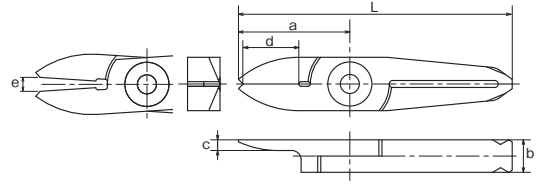
Model No.	Size (mm)						Weight (g)	Material	Applicable models	EDP No.
	a	b	c	d: Effective Length	e: Blade opening	L				
<b>NT05AJL</b>	36	7	5	15	7	72	39	Special alloy steel	GT-NT05 type	360516
<b>NT10AJL</b>	47	9	6	17	9	94	62	Special alloy steel	GT-NT10 type	360520
<b>NT20AJL</b>	57	12	6	20	12	114	156	Special alloy steel	GT-NT20 type	360541

>> For guidance on cutting capability, see P264 of the technical material.

\*Subject to change in the blade tip specifications. See P204.

**No. AJT** Thin, straight blades for plastic

**Plastic** **AJT**/This is a set of straight blades with a thin cutting edge. It can cleanly trim cross sections without remnants.



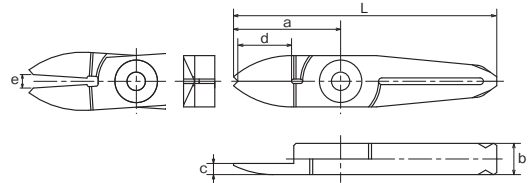
Model No.	Size (mm)						Weight (g)	Material	Applicable models	EDP No.
	a	b	c	d: Effective Length	e: Blade opening	L				
<b>NT03AJT</b>	24	7	2.3	11	3	59	19	Special alloy steel	GT-NT03 type	360526
<b>NT05AJT</b>	29	7	3	15	6	65	29	Special alloy steel	GT-NT05 type	360531
<b>NT10AJT</b>	35	9	4	17	7	82	65	Special alloy steel	GT-NT10 type	360536

>> For guidance on cutting capability, see P264 of the technical material.

Subject to change in the blade tip specifications. See P204.

**No. AJY** Thin, straight blades for plastic (approaching to a gate)

**Plastic** **AJY**/This is effective when the width between the opposing gates is too short and the blade cannot go in due to its thickness.



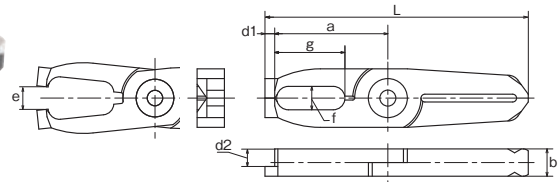
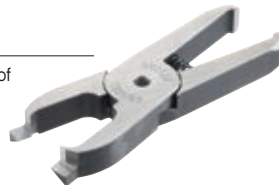
Model No.	Size (mm)						Weight (g)	Material	Applicable models	EDP No.
	a	b	c	d: Effective Length	e: Blade opening	L				
<b>NT03AJY</b>	24	7	2.5	11	3	59	19	Special alloy steel	GT-NT03 type	360527
<b>NT05AJY</b>	29	7	3	15	6	65	29	Special alloy steel	GT-NT05 type	360532
<b>NT10AJY</b>	35	9	4	17	7	72	82	Special alloy steel	GT-NT10 type	360537

>> For guidance on cutting capability, see P264 of the technical material.

Subject to change in the blade tip specifications. See P204.

**No. AD** Lift blades for plastic

**Plastic** **AD**/This is used for batch processing of the three-dimensional gate such as ride gate.



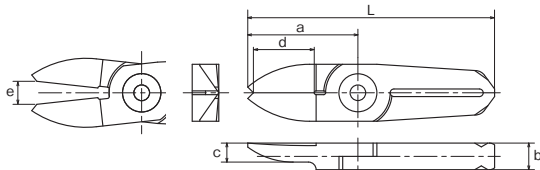
Model No.	Size (mm)			Effective Length (mm)		e: Blade opening (mm)	L (mm)	Weight (g)	Material	Applicable models	EDP No.
	a	b	f×g	d1	d2						
<b>NT05AD</b>	31.5	7	6×18	2.5	4.5	6	67.5	37	Special alloy steel	GT-NT05 type	360533
<b>NT10AD</b>	39	9	8×21.5	4	5	7	86	65	Special alloy steel	GT-NT10 type	360538
<b>NT20AD</b>	46	12	9×24.5	6	7	9	103	141	Special alloy steel	GT-NT20 type	360542

>> For guidance on cutting capability, see P264 of the technical material.

**No. AJV** V shaped straight blades for plastic



**AJV**/This is suitable for gate processing when the cross section is curved or the cut end must not be left.



Model No.	Size (mm)						Weight (g)	Material	Applicable models	EDP No.
	a	b	c	d: Effective Length	e: Blade opening	L				
<b>NT05AJV</b>	29	7	5	15	6	65	29	Special alloy steel	GT-NT05 type	360535
<b>NT10AJV</b>	35	9	6	17	7	82	63	Special alloy steel	GT-NT10 type	360540

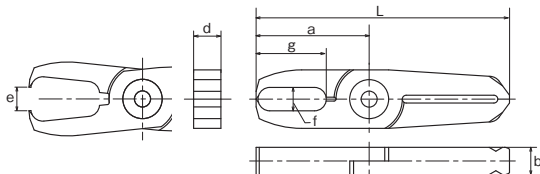
>> For guidance on cutting capability, see P264 of the technical material.

Subject to change in the blade tip specifications. See P204.

**No. AE** Nipping blades for plastic



**AE**/Used for processing plastic gates such as ride gates and discard gates.



Model No.	Size (mm)						Weight (g)	Material	Applicable models	EDP No.
	a	b	f×g	d: Effective Length	e: Blade opening	L				
<b>NT05AE</b>	29	7	6×18	7	6	65	36	Special alloy steel	GT-NT05 type	360517
<b>NT10AE</b>	35	9	8×21.5	9	7	82	75	Special alloy steel	GT-NT10 type	360519

>> For guidance on cutting capability, see P264 of the technical material.