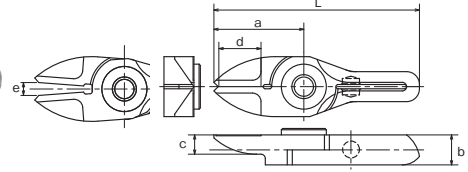


No. AJ/RAJ/AJB Straight blades for plastic

Plastic **AJ**/This is a set of vertical blades with an unbeveled cutting edge. This can cut a gate of molded objects vertically and straight.
RAJ/This is a reverse bevel of AJ type.
AJB/This has a brazed carbide chip used for cutting hard plastic or plastic containing glass fiber.



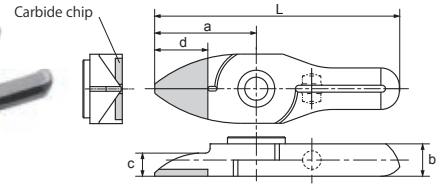
Model No.	Size (mm)						Weight (g)	Material	Applicable models	EDP No.
	a	b	c	d: Effective Length	e: Blade opening	L				
NY03AJ	21	7	4.5	10.5	3	48	17	Special alloy steel	GT-NY03G(-4)	360591
NY03RAJ	21	7	4.5	10.5	3	48	17	Special alloy steel	GT-NY03GR(-4)	360594
NY05AJ	22	7	5	10.5	4	53	22	Special alloy steel	GT-NY05(-4) / NF05	360551
NY05RAJ	22	7	5	10.5	4	53	22	Special alloy steel	GT-NY05R(-4) / NF05	360556
NY05AJB	22	7	5	10.5	4	53	22	w/Carbide chip	GT-NY05(-4) / NF05	360553
NY10AJ	24	7.2	5	12	6	57	28	Special alloy steel	GT-NY10(-4) / NY10G(-4) / NF10 / NY10S	360561
NY10RAJ	24	7.2	5	12	6	57	28	Special alloy steel	GT-NY10R(-4) / NY10GR(-4) / NF10 / NY10S	360566
NY10AJB	24	7.2	5	12	6	57	28	w/Carbide chip	GT-NY10(-4) / NY10G(-4) / NF10 / NY10S	360563
NY15AJ	27	8.2	5.5	13	8	65	41	Special alloy steel	GT-NY15(-4) / NF15	360571
NY15RAJ	27	8.2	5.5	13	8	65	41	Special alloy steel	GT-NY15R(-4) / NF15	360576
NY15AJB	27	8.2	5.5	13	8	65	41	w/Carbide chip	GT-NY15(-4) / NF15	360573
NY25AJ	31	10	6	16	9	77	65	Special alloy steel	GT-NY25(-6) / NY25S	360583
NY25RAJ	31	10	6	16	9	77	65	Special alloy steel	GT-NY25R(-6) / NY25S	360587
NY25AJB	31	10	6	16	9	77	65	w/Carbide chip	GT-NY25(-6) / NY25S	360585

>> For guidance on cutting capability, see P264 of the technical material.

*Subject to change in the blade tip specifications (NY25 types remain same). See P204.

No. RAJB Straight blades for plastic (with carbide chip)

Plastic **AJB**/This is a straight blade with carbide chip brazed at the cutting edge. Can place it along the gate at the right angle. Good for hard plastics or glass fiber containing plastics.

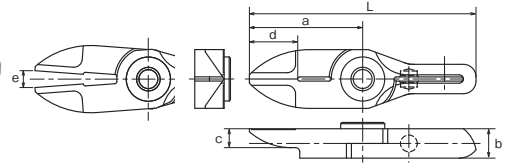


Model No.	Size (mm)						Weight (g)	Material	Applicable models	EDP No.
	a	b	c	d: Effective Length	e: Blade opening	L				
NY05RAJB	22	7	5	10.5	4	53	32	w/Carbide chip	GT-NY05R(-4) / NF05	360579
NY10RAJB	24	7.2	5	12	6	57	38	w/Carbide chip	GT-NY10R(-4) / NY10GR(-4) / NF10 / NY10S / NF10	360580
NY15RAJB	27	8.2	5.5	13	8	65	48	w/Carbide chip	GT-NY15R(-4) / NF15	360581
NY25RAJB	31	10	6	16	9	77	78	w/Carbide chip	GT-NY25R(-6) / NY25S	360582

>> For guidance on cutting capability, see P264 of the technical material.

No. AJL Straight long blades for plastic

Plastic **AJL**/This is a long type set of straight blades. This is useful when there is distance between the nipper and the gate cut portion of the molded object.



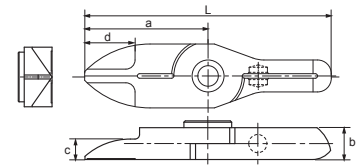
Model No.	Size (mm)						Weight (g)	Material	Applicable models	EDP No.
	a	b	c	d: Effective Length	e: Blade opening	L				
NY03AJL	27	7	4.5	10.5	4	54	21	Special alloy steel	GT-NY03G(-4)	360592
NY05AJL	31	7	5	10.5	5.5	62	29	Special alloy steel	GT-NY05(-4) / NF05	360552
NY10AJL	33	7.2	5	12	8	66	37	Special alloy steel	GT-NY10(-4) / NY10G(-4) / NF10 / NY10S	360562
NY15AJL	38	8.2	5.5	13	11	76	50	Special alloy steel	GT-NY15(-4) / NF15	360572
NY25AJL	46	10	6	16	13	92	88	Special alloy steel	GT-NY25(-6) / NY25S	360584

>> For guidance on cutting capability, see P264 of the technical material.

*Subject to change in the blade tip specifications (all models except NY03 type remain same). See P204.

No. RAJL Straight long blades for plastic

Plastic **AJL**/This is a long type set of straight blades. This is useful when there is a distance between the nipper and the gate cutting point of the molded products.

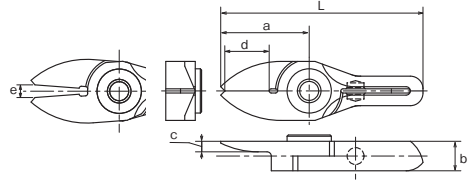


Model No.	Size (mm)						Weight (g)	Material	Applicable models	EDP No.
	a	b	c	d: Effective Length	e: Blade opening	L				
NY03RAJL	27	7	4.5	10.5	4	54	35	Special alloy steel	GT-NY03GR(-4)	360595
NY05RAJL	31	7	5	10.5	5.5	62	36	Special alloy steel	GT-NY05R(-4) / NF05	360596
NY10RAJL	33	7.2	5	12	8	66	44	Special alloy steel	GT-NY10R(-4) / NY10GR(-4) / NF10 / NY10S / NF10	360597
NY15RAJL	38	8.2	5.5	13	11	76	58	Special alloy steel	GT-NY15R(-4) / NF15	360598
NY25RAJL	46	10	6	16	13	92	95	Special alloy steel	GT-NY25R(-6) / NY25S	360599

>> For guidance on cutting capability, see P264 of the technical material.

No. AJT Thin, straight blades for plastic

Plastic **AJT**/This is a set of straight blades with a thin cutting edge. It can cleanly trim cross sections without remnants.



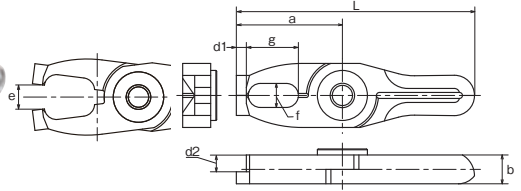
Model No.	Size (mm)						Weight (g)	Material	Applicable models	EDP No.
	a	b	c	d: Effective Length	e: Blade opening	L				
NY03AJT	21	7	2.5	10.5	3	48	17	Special alloy steel	GT-NY03G(-4)	360593
NY05AJT	22	7	3	10.5	4	53	21	Special alloy steel	GT-NY05(-4) / NF05	360554
NY10AJT	24	7.2	3	12	6	57	26	Special alloy steel	GT-NY10(-4) / NY10G(-4) / NF10 / NY10S	360564
NY15AJT	27	8.2	3.5	13	8	65	38	Special alloy steel	GT-NY15(-4) / NF15	360574

>> For guidance on cutting capability, see P264 of the technical material.

*Subject to change in the blade tip specifications. See P204.

No. AD Lift blades for plastic

Plastic **AD**/This is used for batch processing of the three-dimensional gate such as ride gate.

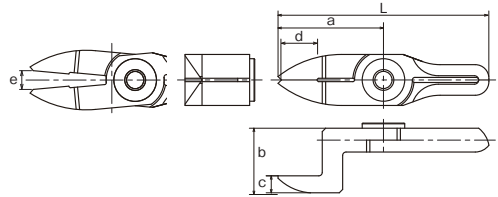


Model No.	Size (mm)			d1 (mm)	d2 (mm)	e: Blade opening (mm)	L (mm)	Weight (g)	Material	Applicable models	EDP No.
	a	b	f×g								
NY10AD	26.5	7.2	6×13	2.5	4.2	6	59.5	31	Special alloy steel	GT-NY10(-4) / NY10G(-4) / NF10 / NY10S	360568
NY15AD	30	8.2	7×14	3	4.7	8	68	45	Special alloy steel	GT-NY15(-4) / NF15	360578
NY25AD	35	10	8×17	4	6	9	81	75	Special alloy steel	GT-NY25(-6) / NY25S	360589

>> For guidance on cutting capability, see P264 of the technical material.

No. AH/RAH Crank blades for plastic

Plastic **AH**/This is a set of crank shaped blade for plastic. It is effective when there are obstructions or the gate is narrow.
RAH/This is a reverse bevel of AH type used when installing the main units face-to-face.



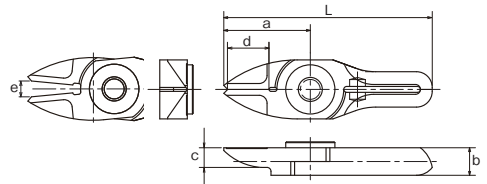
Model No.	Size (mm)						Weight (g)	Material	Applicable models	EDP No.
	a	b	c	d: Effective Length	e: Blade opening	L				
NY05AH	31	19	5	10.5	5.5	62	37	Special alloy steel	GT-NY05(-4) / NF05	360555
NY05RAH	30	12	5	10.5	5	61	31	Special alloy steel	GT-NY05R(-4) / NF05	360557
NY10AH	33	20	5	12	8	66	43	Special alloy steel	GT-NY10(-4) / NY10G(-4) / NF10 / NY10S	360565
NY10RAH	32	12.2	5	12	7	65	36	Special alloy steel	GT-NY10R(-4) / NY10GR(-4) / NF10 / NY10S	360567
NY15AH	38	21.5	5.5	13	11	76	63	Special alloy steel	GT-NY15(-4) / NF15	360575
NY15RAH	35	13.2	5.5	13	9	73	52	Special alloy steel	GT-NY15R(-4) / NF15	360577
NY25AH	46	24	6	17	13	92	110	Special alloy steel	GT-NY25(-6) / NY25S	360586
NY25RAH	42	16	6	16	12	88	89	Special alloy steel	GT-NY25R(-6) / NY25S	360588

>> For guidance on cutting capability, see P264 of the technical material.

*Subject to change in the blade tip specifications (NY25 types remain same). See P204.

No. BJ/RBJ Straight blades for metals

Metal **BJ**/This is a set of vertical blades with an unbeveled cutting edge for metal.
RBJ/This is a reverse bevel of BJ type.



Model No.	Size (mm)						Weight (g)	Material	Applicable models	EDP No.
	a	b	c	d: Effective Length	e: Blade opening	L				
NY05BJ	22	7	5	10.5	4	53	22	Special alloy steel	GT-NY05(-4) / NF05	360558
NY05RBJ	22	7	5	10.5	4	53	22	Special alloy steel	GT-NY05R(-4) / NF05	360559

>> For guidance on cutting capability, see P264 of the technical material.

*Subject to change in the blade tip specifications. See P204.