



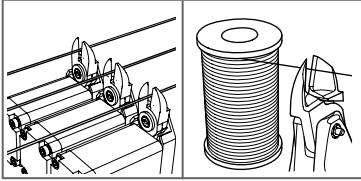
# AIR NIPPER

<http://www.vessel.co.jp/english/airnipper/>

**VESSEL**®

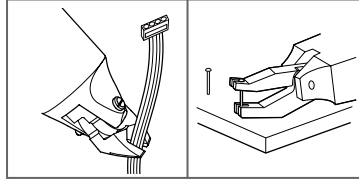


### Wire cutting with coil winding machine



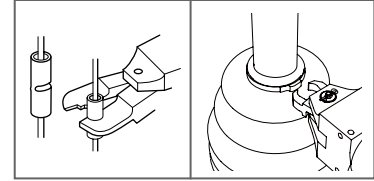
Attach to the nipper unit of automatic coil winding machine for power transformers, fan motors and ignition. Cutting thick diameter wires that cannot be torn off.

### Hand tools for dismantling in recycling plants



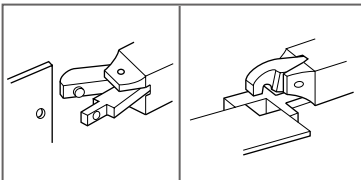
Cuts a variety of wires, copper tubing and steel bands in recycling plants such as PCs and QA equipment, pachinko machines, TVs, and refrigerators, washing machines, etc. Nippers for the purpose of pulling out the pachinko machine pins.

### Crimping task for solderless terminals



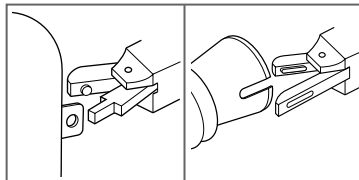
For crimping terminals with various wiring harnesses such as for switchboards, electrical products and lighting equipment. Less strain on fingers and wrists. Increased work efficiency for stop rings for auto parts.

### Die cutter for aluminum products and plastic components



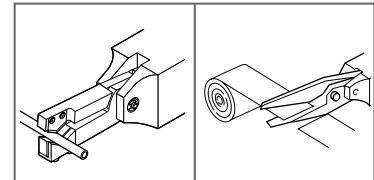
By support for separate blades, allows punching and form cutting of aluminum sash and thin plates.

### Punching of blow molded products, punching slotted holes



Punching blow molded products, punching slotted holes, for containers that cannot be punched and automobile ducts, etc.

### Other applications



Micro-edge air scissors that can cut various hard-to-cut fibers, carbon, aramid fibers, and soft plastic sheets. Nippers for cutting belt loops of jeans, peeling recycled golf balls, cutting edges with textile machinery, etc.

## Capability selection chart

| Types                   | Cutting material |                               |                                    |                             |                 |              |                      | Application model | Air pressure (MPa) |
|-------------------------|------------------|-------------------------------|------------------------------------|-----------------------------|-----------------|--------------|----------------------|-------------------|--------------------|
|                         | Copper wire      | Steel wire (Non-heat treated) | Stainless steel (Non-heat treated) | Piano Wire (HV320 or below) | Soft Plastic    | Hard Plastic | Solderless terminals |                   |                    |
| N<br>•<br>NS<br>•<br>NR | 1.0mm            | 0.5mm                         |                                    | 0.2mm                       | 1.0mm           |              |                      | NS2,N3,NS3,NR3    | 0.4~0.5            |
|                         | 1.0              | 0.5                           |                                    | 0.3                         | 2.0             | 1.0mm        |                      | N5,NS5,NR5        | 0.4~0.5            |
|                         | 1.0              | 0.5                           |                                    | 0.5                         | 3.0             | 2.0          |                      | N7,NS7,NR7        | 0.4~0.5            |
|                         | 1.6              | 1.0                           | 1.0mm                              | 0.5                         | 4.0             | 2.6          |                      | N10,NS10L,NR10L   | 0.4~0.5            |
|                         | 1.8              | 1.2                           | 1.6                                | 1.0                         | 7.0             | 5.0          |                      | N12               | 0.4~0.5            |
|                         | 2.6              | 2.0                           | 2.0                                | 1.2                         | 10.0            | 6.5          |                      | N20,NS20,NR20     | 0.5~0.6            |
|                         | 3.3              | 2.8                           | 3.5                                | 1.6                         | 12.0            |              | 1.25/2.0             | N30,NS30,NR30     | 0.5~0.6            |
|                         | 5.5              | 4.5                           |                                    |                             |                 |              | N50,NR50             | 0.5~0.6           |                    |
| With pressure booster   | 2.6              | 1.6                           | 1.3                                | 1.0                         | 5.0             | 4.0          | 12.5/2.0             | P-10L             |                    |
|                         | 3.0              | 2.2                           | 2.8                                | 1.2                         | 8.0             | 6.0          | 2.0/5.5              | P-20              |                    |
|                         | 4.8              | 4.0                           | 2.8                                | 1.2                         | 13.0            | 7.0          | ~0.8                 | P-30              |                    |
|                         | 6.5              | 5.5                           | 4.0                                | 2.0                         |                 |              |                      | P-50              |                    |
| NY                      |                  |                               |                                    |                             | 2.0             | 1.3          |                      | NY03              | 0.4~0.5            |
|                         | 1.6              | 1.0                           |                                    |                             | 3.0             | 2.0          |                      | NF05,NY05         | 0.4~0.5            |
|                         | 1.7              | 1.1                           |                                    |                             | 3.5             | 2.3          |                      | NF10,NY10         | 0.4~0.5            |
|                         |                  | 1.2                           |                                    |                             | 4.0             | 2.6          |                      | NF15,NY15         | 0.4~0.5            |
|                         |                  |                               |                                    |                             | 5.0             | 3.4          |                      | NY25              | 0.5~0.6            |
| NT                      |                  |                               |                                    |                             | 1.5             | 1            |                      | NT03              | 0.4~0.5            |
|                         |                  |                               |                                    |                             | 2.5             | 1.5          |                      | NT05              | 0.4~0.5            |
|                         |                  |                               |                                    |                             | 3.5             | 2.5          |                      | NT10              | 0.4~0.5            |
|                         |                  |                               |                                    |                             | 5.0             | 3.4          |                      | NT20              | 0.4~0.5            |
|                         | AS, HS, BJ type  |                               | BBB                                | HS                          | AP, PF, AJ type |              | ACD type             |                   |                    |

## Air Nippers For Resin Gate

These are high-class air nippers that can be mounted on gate cutting equipment and standby jigs for accurate, speedy cutting of resin products. VESSEL has a wide selection of items to meet a variety of needs, from around-the-clock operations to high cutting precision.



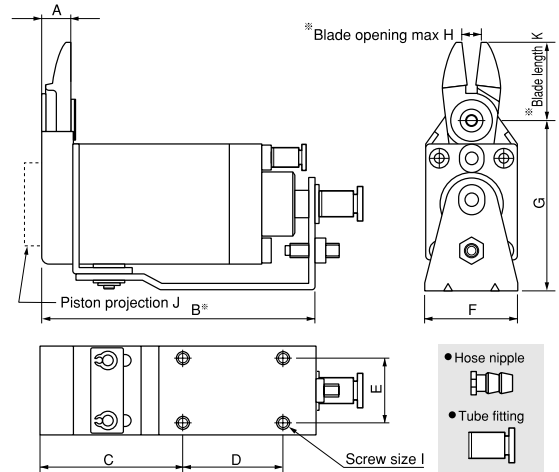
# Slide-off air nipper horizontal-type

## GT-NY05/10/15/25 Slide-Off Air Nippers Horizontal-Type

NY



The horizontal slide enables space to be used effectively. The low profile of the main unit allows work to be removed without obstructing the operations of the chuck plate.



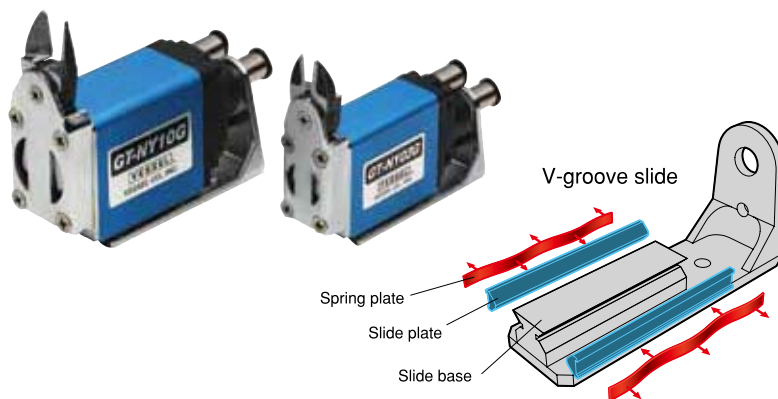
| Capacity $\phi$ (mm) |              |        |       | Model No.  | Size (mm) |       |      |    |    |    |      |   |    |   |    | Air Consumption (cm <sup>3</sup> /str.) | Weight (g) | Slide Direction/ Distance (mm) | Spec. & Size of the Hose Port           |
|----------------------|--------------|--------|-------|------------|-----------|-------|------|----|----|----|------|---|----|---|----|---|------------|--------------------------------|---|
| Soft Plastic         | Hard Plastic | Copper | Steel |            | A         | B     | C    | D  | E  | F  | G    | H | I  | J | K  |   |            |                                |   |
| 3.0                  | 2.0          | 1.6    | 1.0   | GT-NY05    | 8.6       | 75.9  | 40.9 | 25 | 15 | 23 | 47.6 | 4 | M4 | 3 | 22 | 48                                      | 155        | Pull 0~3                       | W/hose nipple<br>Hose I.D. $\phi$ 2.5mm |
| 3.0                  | 2.0          | 1.6    | 1.0   | GT-NY05R   |           |       |      |    |    |    |      |   |    |   |    |   |            |                                |   |
| 3.0                  | 2.0          | 1.6    | 1.0   | GT-NY05-4  |           |       |      |    |    |    |      |   |    |   |    |   |            |                                |   |
| 3.0                  | 2.0          | 1.6    | 1.0   | GT-NY05R-4 |           |       |      |    |    |    |      |   |    |   |    |   |            |                                |   |
| 3.5                  | 2.3          |        |       | GT-NY10    | 8.8       | 82.1  | 42.1 | 30 | 20 | 28 | 51.6 | 6 | M4 | 5 | 24 | 68                                      | 210        | Pull 0~3                       | W/hose nipple<br>Hose I.D. $\phi$ 2.5mm |
| 3.5                  | 2.3          |        |       | GT-NY10R   |           |       |      |    |    |    |      |   |    |   |    |   |            |                                |   |
| 3.5                  | 2.3          |        |       | GT-NY10-4  |           |       |      |    |    |    |      |   |    |   |    |   |            |                                |   |
| 3.5                  | 2.3          |        |       | GT-NY10R-4 |           |       |      |    |    |    |      |   |    |   |    |   |            |                                |   |
| 4.0                  | 2.6          |        |       | GT-NY15    | 10.2      | 93    | 48   | 35 | 25 | 33 | 58   | 8 | M4 | 5 | 27 | 136                                     | 319        | Pull 0~3                       | W/hose nipple<br>Hose I.D. $\phi$ 2.5mm |
| 4.0                  | 2.6          |        |       | GT-NY15R   |           |       |      |    |    |    |      |   |    |   |    |   |            |                                |   |
| 4.0                  | 2.6          |        |       | GT-NY15-4  |           |       |      |    |    |    |      |   |    |   |    |   |            |                                |   |
| 4.0                  | 2.6          |        |       | GT-NY15R-4 |           |       |      |    |    |    |      |   |    |   |    |   |            |                                |   |
| 5.0                  | 3.4          |        |       | GT-NY25    | 12.5      | 108.5 | 54.5 | 40 | 30 | 42 | 69   | 9 | M5 | 2 | 31 | 184                                     | 580        | Pull 0~5                       | W/hose nipple<br>Hose I.D. $\phi$ 4mm   |
| 5.0                  | 3.4          |        |       | GT-NY25R   |           |       |      |    |    |    |      |   |    |   |    |   |            |                                |   |
| 5.0                  | 3.4          |        |       | GT-NY25-6  |           |       |      |    |    |    |      |   |    |   |    |   |            |                                |   |
| 5.0                  | 3.4          |        |       | GT-NY25R-6 |           |       |      |    |    |    |      |   |    |   |    |   |            |                                |   |

※Blade length (K) and opening max. (H) is the dimension adjusted for standard blade (AJ type). ※Air Pressure...0.4~0.5 MPa (NY25 type: 0.5~0.6)  
 ※B refers to the distance from the cut position for PUSH style models, and the distance from the start position for PULL style models.

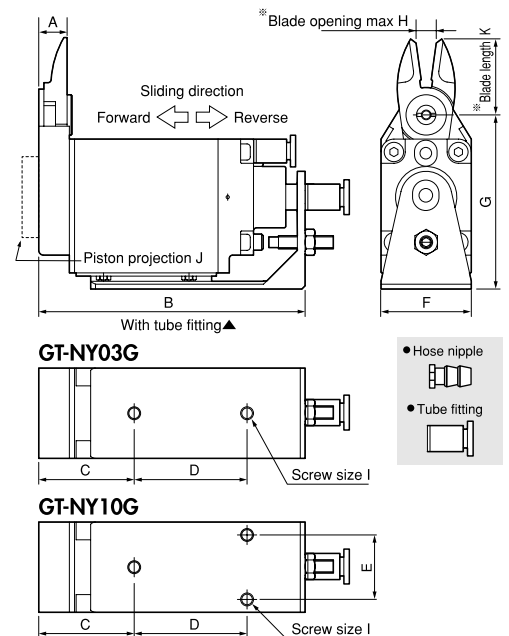
## GT-NY03G/10G Slide-Off Air Nippers Horizontal-Type

Patented

NY-G



VESSEL's patented, V-groove slide base ensures constant, stable positioning. The unit is not subject to inclined loads, and has achieved high precision gate cutting performance.



| Capacity $\phi$ (mm) |              | Model No.   | Size (mm) |      |      |    |    |    |      |   |    |   |    | Air Consumption (cm <sup>3</sup> /str.) | Weight (g) | Slide Direction/ Distance (mm) | Spec. & Size of the Hose Port           |
|----------------------|--------------|-------------|-----------|------|------|----|----|----|------|---|----|---|----|---|------------|--------------------------------|---|
| Soft Plastic         | Hard Plastic |             | A         | B    | C    | D  | E  | F  | G    | H | I  | J | K  |   |            |                                |   |
| 2.0                  | 1.3          | GT-NY03G    | 8.6       | 74.5 | 29.5 | 30 | -  | 19 | 46.5 | 3 | M4 | 0 | 21 | 37                                      | 160        | Pull 0~3                       | W/hose nipple<br>Hose I.D. $\phi$ 2.5mm |
| 2.0                  | 1.3          | GT-NY03GR   |           |      |      |    |    |    |      |   |    |   |    |   |            |                                |   |
| 2.0                  | 1.3          | GT-NY03G-4  |           |      |      |    |    |    |      |   |    |   |    |   |            |                                |   |
| 2.0                  | 1.3          | GT-NY03GR-4 |           |      |      |    |    |    |      |   |    |   |    |   |            |                                |   |
| 3.5                  | 2.3          | GT-NY10G    | 8.8       | 82.6 | 29.6 | 35 | 20 | 28 | 54   | 6 | M4 | 5 | 24 | 68                                      | 275        | Pull 0~3                       | W/hose nipple<br>Hose I.D. $\phi$ 2.5mm |
| 3.5                  | 2.3          | GT-NY10GR   |           |      |      |    |    |    |      |   |    |   |    |   |            |                                |   |
| 3.5                  | 2.3          | GT-NY10G-4  |           |      |      |    |    |    |      |   |    |   |    |   |            |                                |   |
| 3.5                  | 2.3          | GT-NY10GR-4 |           |      |      |    |    |    |      |   |    |   |    |   |            |                                |   |

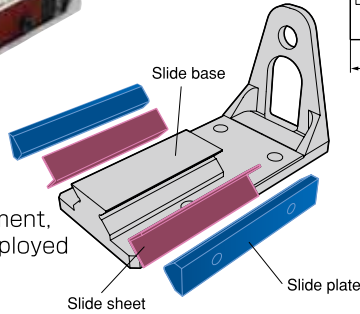
※Blade length (K) and opening max. (H) is the dimension adjusted for standard blade (AJ type). ※Air Pressure...0.4~0.5 MPa

Blade is optional. Note that forward and backward-facing blades are available.

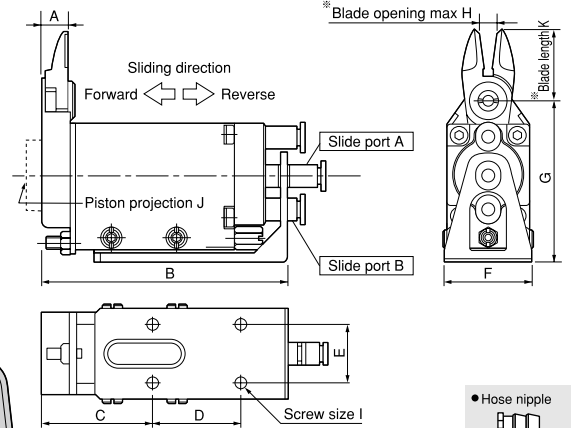
# Slide-off air nipper horizontal-type

## GT-NY10S/25S Double Action Sliding Air Nippers

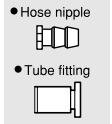
# NY-S



The springless slide construction of the main unit ensures smooth movement, and a V-groove slide base has been employed for high precision positioning.



**WARNING**  
Injecting air into slide port A slides the nippers in reverse.  
Injecting air into slide port B slides the nippers forward.

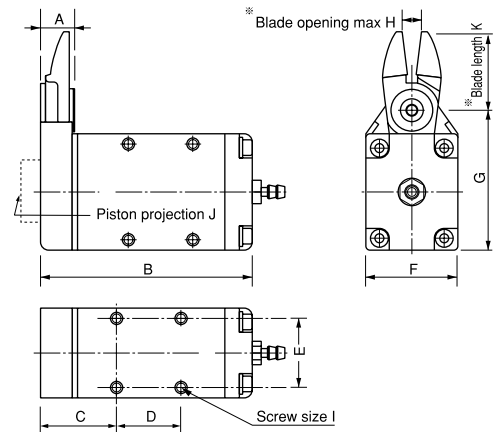


| Capacity $\phi$ (mm)<br>Soft Plastic Hard Plastic | Model No. | Size (mm) |       |    |    |    |    |    |   |      |   |    | Air Consumption<br>(cm <sup>3</sup> /str.) | Weight<br>(g) | Slide Direction/<br>Distance (mm) | Spec. & Size of the Hose Port                       |
|---|-----------|-----------|-------|----|----|----|----|----|---|------|---|----|--|---------------|-----------------------------------|---|
|   |           | A         | B     | C  | D  | E  | F  | G  | H | I    | J | K  |  |               |                                   |   |
| 3.5 2.3   | GT-NY10S  | 8.8       | 84.5  | 38 | 30 | 20 | 32 | 55 | 6 | 4-M4 | 5 | 24 | 68   | 300           | 0~3.5                             | W/tube fitting Hose I.D. $\phi$ 2.5×O.D. $\phi$ 4mm |
| 5.0 3.4   | GT-NY25S  | 12.5      | 106.5 | 47 | 40 | 30 | 47 | 72 | 9 | 4-M5 | 2 | 31 | 184  | 695           | 0~5.0                             | W/tube fitting Hose I.D. $\phi$ 4×O.D. $\phi$ 6mm   |

\*Blade length (K) and opening max. (H) is the dimension adjusted for standard blade (AJ type). \*Air Pressure...NY10S : 0.4~0.5 MPa / NY25S : 0.5~0.6 MPa

## GT-NF05/10/15 Type-F Air Nippers

# NF



These compact, lightweight nippers have been designed for easy mounting inside equipment and to enable secure mounting under high-density mounting conditions.

| Capacity $\phi$ (mm) |              |        |       | Model No. | Size (mm) |      |      |    |    |    |      |   | Air Consumption<br>(cm <sup>3</sup> /str.) | Weight<br>(g) | Spec. & Size of the Hose Port |     |     |   |
|----------------------|--------------|--------|-------|-----------|-----------|------|------|----|----|----|------|---|--|---------------|-------------------------------|-----|-----|---|
| Soft Plastic         | Hard Plastic | Copper | Steel |           | A         | B    | C    | D  | E  | F  | G    | H |  |               |                               | I   | J   | K   |
| 3.0                  | 2.0          | 1.6    | 1.0   | GT-NF05   | 8.6       | 59.9 | 21.9 | 17 | 18 | 23 | 39.5 | 4 | M3   | 3             | 22                            | 43  | 101 | W/hose nipple<br>Hose I.D. $\phi$ 2.5mm× $\phi$ 4mm |
| 3.5                  | 2.3          | 1.7    | 1.1   | GT-NF10   | 8.8       | 65.1 | 23.1 | 20 | 22 | 28 | 43.5 | 6 | M3.5                                       | 5             | 24                            | 63  | 143 |   |
| 4.0                  | 2.6          | 1.8    | 1.2   | GT-NF15   | 10.2      | 73   | 25   | 25 | 26 | 33 | 48.5 | 8 | M4   | 5             | 27                            | 128 | 219 |   |

\*Blade opening max. (K) is the dimension adjusted for standard blade (AJ type). Mounting screw for NF10 (M3.5) is regarded as spare part. \*Air Pressure...0.4~0.5 MPa

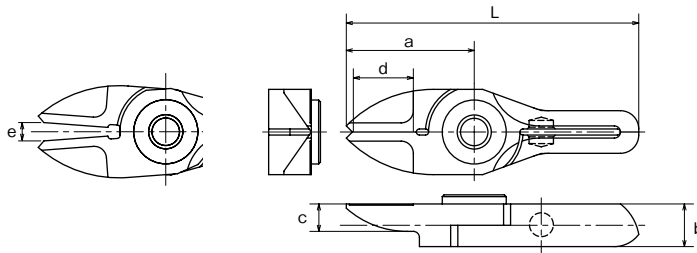
# Slide-off air nipper horizontal-type blades

## AJ/RAJ AJB

### Straight blades for plastic

**AJ/** This is a vertical set of blades with an unbeveled cutting edge. You can apply it at a right angle to the gate. **RAJ/** This is a reverse bevel of AJ type. **AJB/** This has a brazed carbide tip, suitable for cutting hard plastic or plastic containing glass fiber.

Plastic



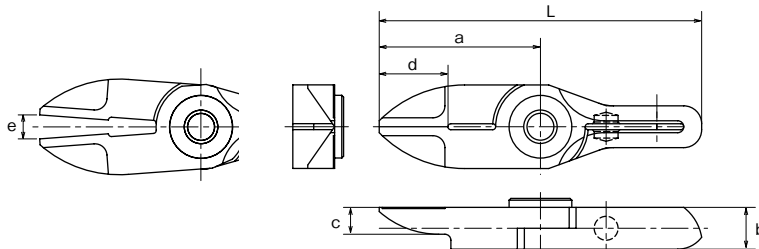
| Model No. | Size (mm) |     |     |      |   |    | Weight (g) | Material            | Application model                        |
|-----------|-----------|-----|-----|------|---|----|------------|---------------------|--|
|           | a         | b   | c   | d    | e | L  |            |                     |  |
| NY03AJ    | 21        | 7   | 4.5 | 10.5 | 3 | 48 | 17         | Special alloy steel | GT-NY03G(-4)                             |
| NY03RAJ   | 21        | 7   | 4.5 | 10.5 | 3 | 48 | 17         | Special alloy steel | GT-NY03GR(-4)                            |
| NY05AJ    | 22        | 7   | 5   | 10.5 | 4 | 53 | 22         | Special alloy steel | GT-NY05(-4) / NF05                       |
| NY05RAJ   | 22        | 7   | 5   | 10.5 | 4 | 53 | 22         | Special alloy steel | GT-NY05R(-4) / NF05                      |
| NY05AJB   | 22        | 7   | 5   | 10.5 | 4 | 53 | 22         | Sintered Alloy      | GT-NY05(-4) / NF05                       |
| NY10AJ    | 24        | 7.2 | 5   | 12   | 6 | 57 | 28         | Special alloy steel | GT-NY10(-4) / NY10G(-4) / NF10 / NY10S   |
| NY10RAJ   | 24        | 7.2 | 5   | 12   | 6 | 57 | 28         | Special alloy steel | GT-NY10R(-4) / NY10GR(-4) / NF10 / NY10S |
| NY10AJB   | 24        | 7.2 | 5   | 12   | 6 | 57 | 28         | Sintered Alloy      | GT-NY10R(-4) / NY10GR(-4) / NF10 / NY10S |
| NY15AJ    | 27        | 8.2 | 5.5 | 13   | 8 | 65 | 41         | Special alloy steel | GT-NY15(-4) / NF15                       |
| NY15RAJ   | 27        | 8.2 | 5.5 | 13   | 8 | 65 | 41         | Special alloy steel | GT-NY15R(-4) / NF15                      |
| NY15AJB   | 27        | 8.2 | 5.5 | 13   | 8 | 65 | 41         | Sintered Alloy      | GT-NY15R(-4) / NF15                      |
| NY25AJ    | 31        | 10  | 6   | 16   | 9 | 77 | 65         | Special alloy steel | GT-NY25(-6) / NY25S                      |
| NY25RAJ   | 31        | 10  | 6   | 16   | 9 | 77 | 65         | Special alloy steel | GT-NY25R(-6) / NY25S                     |
| NY25AJB   | 31        | 10  | 6   | 16   | 9 | 77 | 65         | Sintered Alloy      | GT-NY25R(-6) / NY25S                     |

## AJL

### Straight long blades for plastic

**AJL/** This is a long type set of straight blades. This is useful when there is distance between the nippers and the gate cut portion of the workpiece.

Plastic



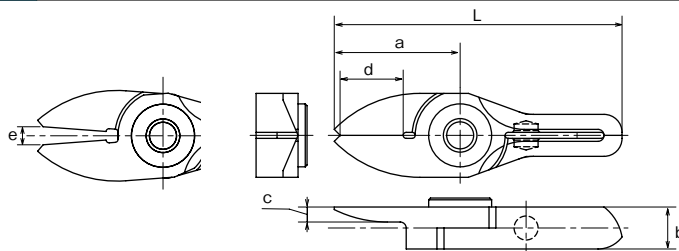
| Model No. | Size (mm) |     |     |      |     |    | Weight (g) | Material            | Application model                      |
|-----------|-----------|-----|-----|------|-----|----|------------|---------------------|--|
|           | a         | b   | c   | d    | e   | L  |            |                     |  |
| NY03AJL   | 27        | 7   | 4.5 | 10.5 | 4   | 54 | 21         | Special alloy steel | GT-NY03G(-4)                           |
| NY05AJL   | 31        | 7   | 5   | 10.5 | 5.5 | 62 | 29         | Special alloy steel | GT-NY05(-4) / NF05                     |
| NY10AJL   | 33        | 7.2 | 5   | 12   | 8   | 66 | 37         | Special alloy steel | GT-NY10(-4) / NY10G(-4) / NF10 / NY10S |
| NY15AJL   | 38        | 8.2 | 5.5 | 13   | 11  | 76 | 50         | Special alloy steel | GT-NY15(-4) / NF15                     |
| NY25AJL   | 46        | 10  | 6   | 16   | 13  | 92 | 88         | Special alloy steel | GT-NY25(-6) / NY25S                    |

## AJT

### Thin, straight blades for plastic

**AJT/** This is a set of straight blades with a thin cutting edge. It can cleanly trim cross sections without remnants.

Plastic



| Model No. | Size (mm) |     |     |      |   |    | Weight (g) | Material            | Application model                      |
|-----------|-----------|-----|-----|------|---|----|------------|---------------------|--|
|           | a         | b   | c   | d    | e | L  |            |                     |  |
| NY03AJT   | 21        | 7   | 2.5 | 10.5 | 3 | 48 | 17         | Special alloy steel | GT-NY03G(-4)                           |
| NY05AJT   | 22        | 7   | 3   | 10.5 | 4 | 53 | 21         | Special alloy steel | GT-NY05(-4) / NF05                     |
| NY10AJT   | 24        | 7.2 | 3   | 12   | 6 | 57 | 26         | Special alloy steel | GT-NY10(-4) / NY10G(-4) / NF10 / NY10S |
| NY15AJT   | 27        | 8.2 | 3.5 | 13   | 8 | 65 | 38         | Special alloy steel | GT-NY15(-4) / NF15                     |

# Slide-off air nipper horizontal-type blades

## AD

### Lift blades for plastic

**AD/** This is used for batch processing of the three-dimensional gate such as ride gate.

**Plastic**

| Model No.     | Size (mm) |     | f×g  | d1 (mm) | d2  | e (mm) | L (mm) | Weight (g) | Material            | Application model                      |
|---------------|-----------|-----|------|---------|-----|--------|--------|------------|---------------------|--|
|               | a         | b   |      |         |     |        |        |            |                     |  |
| <b>NY10AD</b> | 26.5      | 7.2 | 6×13 | 4.2     | 2.5 | 6      | 59.5   | 31         | Special alloy steel | GT-NY10(-4) / NY10G(-4) / NF10 / NY10S |
| <b>NY15AD</b> | 30        | 8.2 | 7×14 | 4.7     | 3   | 8      | 68     | 45         | Special alloy steel | GT-NY15(-4) / NF15                     |
| <b>NY25AD</b> | 35        | 10  | 8×17 | 6       | 4   | 9      | 81     | 75         | Special alloy steel | GT-NY25(-6) / NY25S                    |

## AH/ RAH

### Crank blades for plastic

**AH/** This is a set of blades with a clamped cutting edge for plastic. It is effective when there are obstructions or the gate is narrow. **RAH/** This is a reverse bevel of AH type used when installing the main units face-to-face.

**Plastic**

| Model No.      | Size (mm) |      |     | d    | e   | L  | Weight (g) | Material            | Application model                      |
|----------------|-----------|------|-----|------|-----|----|------------|---------------------|--|
|                | a         | b    | c   |      |     |    |            |                     |  |
| <b>NY05AH</b>  | 31        | 19   | 5   | 10.5 | 5.5 | 62 | 37         | Special alloy steel | GT-NY05(-4) / NF05                     |
| <b>NY05RAH</b> | 30        | 12   | 5   | 10.5 | 5   | 61 | 31         | Special alloy steel | GT-NY05R(-4) / NF05                    |
| <b>NY10AH</b>  | 33        | 20   | 5   | 12   | 8   | 66 | 43         | Special alloy steel | GT-NY10(-4) / NY10G(-4) / NF10 / NY10S |
| <b>NY15AH</b>  | 38        | 21.5 | 5.5 | 13   | 11  | 76 | 63         | Special alloy steel | GT-NY15(-4) / NF15                     |
| <b>NY15RAH</b> | 35        | 13.2 | 5.5 | 13   | 9   | 73 | 52         | Special alloy steel | GT-NY15R(-4) / NF15                    |
| <b>NY25AH</b>  | 46        | 24   | 6   | 17   | 13  | 92 | 110        | Special alloy steel | GT-NY25(-6) / NY25S                    |
| <b>NY25RAH</b> | 42        | 16   | 6   | 16   | 12  | 88 | 89         | Special alloy steel | GT-NY25R(-6) / NY25S                   |

## BJ/ RBJ

### Straight thin blades for metal

**BJ/** This is a set of vertical blades with an unbeveled cutting edge for metal. **RBJ/** This is a reverse bevel of BJ type.

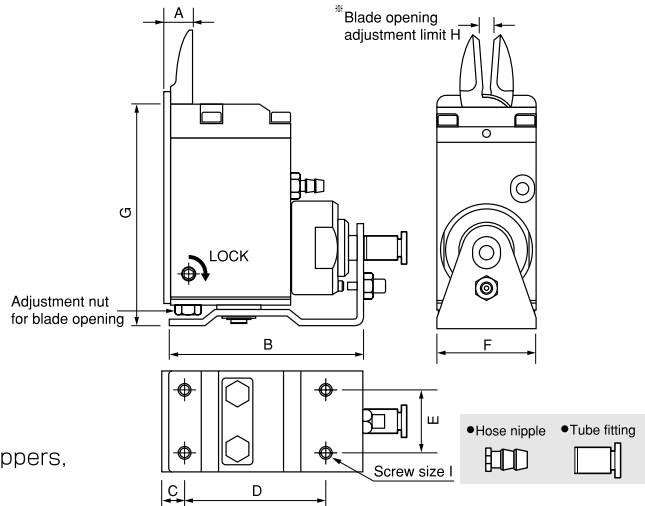
**Plastic**

| Model No.      | Size (mm) |   |   | d    | e | L  | Weight (g) | Material            | Application model   |
|----------------|-----------|---|---|------|---|----|------------|---------------------|---------------------|
|                | a         | b | c |      |   |    |            |                     |                     |
| <b>NY05BJ</b>  | 22        | 7 | 5 | 10.5 | 4 | 53 | 22         | Special alloy steel | GT-NY05(-4) / NF05  |
| <b>NY05RBJ</b> | 22        | 7 | 5 | 10.5 | 4 | 53 | 22         | Special alloy steel | GT-NY05R(-4) / NF05 |

# Slide-off air nipper vertical-type

## GT-NT03/05/10/20 Slide-Off Air Nippers Vertical-type

NT



Blade gape is adjustable, and fine adjustments are easy to make after mounting the nippers, ensuring clean, unblemished cut surfaces.

| Capacity $\phi$ (mm)<br>Soft Plastic Hard Plastic | Model No.  | Size (mm) |     |    |    |    |    |       |       |    | Air Consumption<br>(cm <sup>3</sup> /str.) | Weight<br>(g) | Slide Direction/<br>Distance (mm) | Spec. & Size of the Hose Port                     |
|---|------------|-----------|-----|----|----|----|----|-------|-------|----|--|---------------|-----------------------------------|---|
|   |            | A         | B   | C  | D  | E  | F  | G     | H     | I  |  |               |                                   |   |
| 1.5 1.0   | GT-NT03    | 9         | 62  | 7  | 43 | 14 | 19 | 68.1  | 1.5~3 | M3 | 0.4~0.5                                    | 178           | Pull 0~3                          | W/hose nipple Hose I.D. $\phi$ 2.5mm              |
| 1.5 1.0   | GT-NT03R   |           |     |    |    |    |    |       |       |    |  |               |                                   |   |
| 1.5 1.0   | GT-NT03-4  |           |     |    |    |    |    |       |       |    |  |               |                                   |   |
| 1.5 1.0   | GT-NT03R-4 |           |     |    |    |    |    |       |       |    |  |               |                                   |   |
| 2.5 1.5   | GT-NT05    | 9         | 64  | 7  | 45 | 20 | 32 | 71.1  | 3~6   | M4 | 0.4~0.5                                    | 325           | Pull 0~3                          | W/hose nipple Hose I.D. $\phi$ 2.5mm              |
| 2.5 1.5   | GT-NT05R   |           |     |    |    |    |    |       |       |    |  |               |                                   |   |
| 2.5 1.5   | GT-NT05-4  |           |     |    |    |    |    |       |       |    |  |               |                                   |   |
| 2.5 1.5   | GT-NT05R-4 |           |     |    |    |    |    |       |       |    |  |               |                                   |   |
| 3.5 2.3   | GT-NT10    | 11        | 73  | 8  | 53 | 24 | 38 | 88.1  | 4~7   | M4 | 0.4~0.5                                    | 515           | Pull 0~3                          | W/hose nipple Hose I.D. $\phi$ 2.5mm              |
| 3.5 2.3   | GT-NT10R   |           |     |    |    |    |    |       |       |    |  |               |                                   |   |
| 3.5 2.3   | GT-NT10-6  |           |     |    |    |    |    |       |       |    |  |               |                                   |   |
| 3.5 2.3   | GT-NT10R-6 |           |     |    |    |    |    |       |       |    |  |               |                                   |   |
| 5.0 3.4   | GT-NT20    | 14        | 103 | 10 | 80 | 28 | 44 | 102.1 | 4.5~9 | M5 | 0.5~0.6                                    | 930           | Pull 0~8                          | W/hose nipple Hose I.D. $\phi$ 4mm                |
| 5.0 3.4   | GT-NT20R   |           |     |    |    |    |    |       |       |    |  |               |                                   |   |
| 5.0 3.4   | GT-NT20-6  |           |     |    |    |    |    |       |       |    | 0.5~0.6                                    | 930           | Pull 0~8                          | W/tube fitting Hose I.D. $\phi$ 4XO.D. $\phi$ 6mm |
| 5.0 3.4   | GT-NT20R-6 |           |     |    |    |    |    |       |       |    |  |               |                                   |   |

※Blade opening adjustment limit (H) is the dimension adjusted for standard blade (AJ type). ※Air Pressure...0.4~0.5 MPa

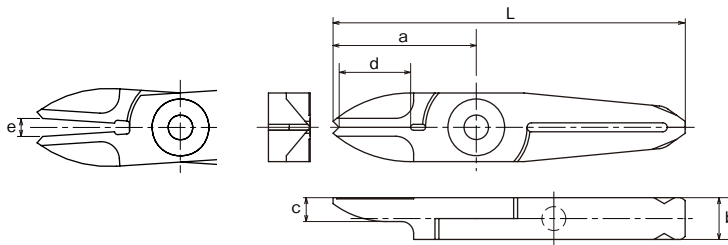
## Slide-off air nipper vertical-type blades

AJ/AJH  
AJB

### Straight blades for plastic

**AJ/** This is a set of vertical blades with an unbeveled cutting edge. You can apply it at a right angle to the gate. **AJH/** This has a brazed high-speed steel tip suitable for cutting hard plastic. **AJB/** This has a brazed carbide tip used for cutting hard plastic or plastic containing glass fiber. Improved durability.

Plastic



| Model No. | Size (mm) |    |     |    |   |    | Weight<br>(g) | Material            | Application model |
|-----------|-----------|----|-----|----|---|----|---------------|---------------------|-------------------|
|           | a         | b  | c   | d  | e | L  |               |                     |                   |
| NT03AJ    | 24        | 7  | 4   | 11 | 3 | 59 | 20            | Special alloy steel | GT-NT03 type      |
| NT05AJ    | 29        | 7  | 5   | 15 | 6 | 65 | 30            | Special alloy steel |                   |
| NT05AJH   | 29        | 7  | 5   | 15 | 6 | 65 | 30            | High Speed Steel    | GT-NT05 type      |
| NT05AJB   | 29        | 7  | 5   | 15 | 6 | 65 | 30            | Sintered Alloy      |                   |
| NE5AJ     | 24        | 7  | 3.5 | 12 | 6 | 60 | 35            | Special alloy steel | GT-NT10 type      |
| NT10AJ    | 35        | 9  | 6   | 17 | 7 | 82 | 62            | Special alloy steel |                   |
| NT10AJH   | 35        | 9  | 6   | 17 | 7 | 82 | 76            | High Speed Steel    | GT-NT10 type      |
| NT10AJB   | 35        | 9  | 6   | 17 | 7 | 82 | 76            | Sintered Alloy      |                   |
| NE10AJ    | 27        | 9  | 4.5 | 12 | 7 | 74 | 70            | Special alloy steel | GT-NT20 type      |
| NT20AJ    | 40        | 12 | 6   | 20 | 9 | 97 | 120           | Special alloy steel |                   |
| NT20AJH   | 40        | 12 | 6   | 20 | 9 | 97 | 120           | High Speed Steel    | GT-NT20 type      |
| NT20AJB   | 40        | 12 | 6   | 20 | 9 | 97 | 120           | Sintered Alloy      |                   |

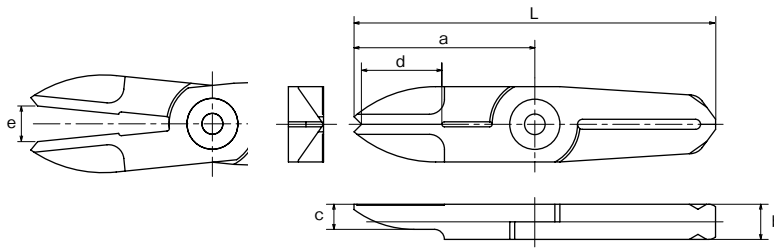
# Slide-off air nipper vertical-type blades

**AJL**

## Straight long blades for plastic

**AJL/** This is a long type set of straight blades. This is useful when there is distance between the nippers and the gate cut portion of the workpiece.

Plastic



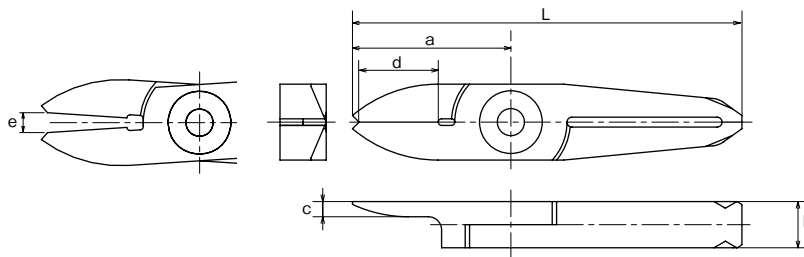
| Model No. | Size (mm) |    |   |    |    |     | Weight (g) | Material            | Application model |
|-----------|-----------|----|---|----|----|-----|------------|---------------------|-------------------|
|           | a         | b  | c | d  | e  | L   |            |                     |                   |
| NT05AJL   | 36        | 7  | 5 | 15 | 7  | 72  | 39         | Special alloy steel | GT-NT05 type      |
| NT10AJL   | 47        | 9  | 6 | 17 | 9  | 94  | 62         | Special alloy steel | GT-NT10 type      |
| NT20AJL   | 57        | 12 | 6 | 20 | 12 | 114 | 156        | Special alloy steel | GT-NT20 type      |

**AJT**

## Thin, straight blades for plastic

**AJT/** This is a set of straight blades with a thin cutting edge. It can cleanly finish cross sections without remnants.

Plastic



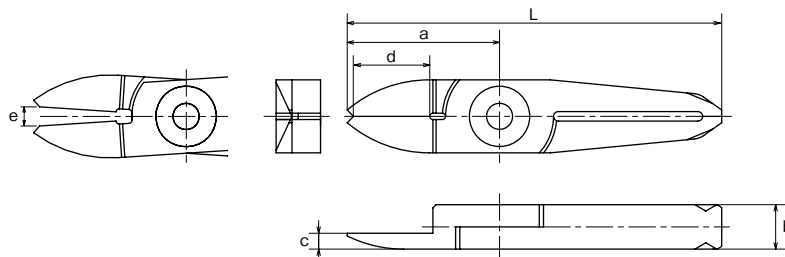
| Model No. | Size (mm) |   |     |    |   |    | Weight (g) | Material            | Application model |
|-----------|-----------|---|-----|----|---|----|------------|---------------------|-------------------|
|           | a         | b | c   | d  | e | L  |            |                     |                   |
| NT03AJT   | 24        | 7 | 2.3 | 11 | 3 | 59 | 19         | Special alloy steel | GT-NT03 type      |
| NT05AJT   | 29        | 7 | 3   | 15 | 6 | 65 | 29         | Special alloy steel | GT-NT05 type      |
| NT10AJT   | 35        | 9 | 4   | 17 | 7 | 82 | 65         | Special alloy steel | GT-NT10 type      |

**AJY**

## Thin, straight blades for plastic

**AJY/** This is effective when the width between the opposing gates is too short and the thickness of the blades will not go in.

Plastic



| Model No. | Size (mm) |   |     |    |   |    | Weight (g) | Material            | Application model |
|-----------|-----------|---|-----|----|---|----|------------|---------------------|-------------------|
|           | a         | b | c   | d  | e | L  |            |                     |                   |
| NT03AJY   | 24        | 7 | 2.5 | 11 | 3 | 59 | 19         | Special alloy steel | GT-NT03 type      |
| NT05AJY   | 29        | 7 | 5   | 15 | 6 | 65 | 29         | Special alloy steel | GT-NT05 type      |
| NT10AJY   | 35        | 9 | 4   | 17 | 7 | 72 | 82         | Special alloy steel | GT-NT10 type      |

# Slide-off air nipper vertical-type blades

AD

### Lift blades for plastic

**AD/** This is used for batch processing of the three-dimensional gate such as ride gate.

Plastic

| Model No.     | Size (mm) |    |        | d1 (mm) | d2 (mm) | e (mm) | L (mm) | Weight (g) | Material            | Application model |
|---------------|-----------|----|--------|---------|---------|--------|--------|------------|---------------------|-------------------|
|               | a         | b  | f×g    |         |         |        |        |            |                     |                   |
| <b>NT05AD</b> | 31.5      | 7  | 6×18   | 2.5     | 4.5     | 6      | 67.5   | 37         | Special alloy steel | GT-NT05 type      |
| <b>NT10AD</b> | 39        | 9  | 8×21.5 | 4       | 5       | 7      | 86     | 65         | Special alloy steel | GT-NT10 type      |
| <b>NT20AD</b> | 46        | 12 | 9×24.5 | 6       | 7       | 9      | 103    | 141        | Special alloy steel | GT-NT20 type      |

AJV

### V shaped straight blades for plastic

**AJV/** This is suitable for gate processing when the cross section is curved or the cut end must not be left.

Plastic

| Model No.      | Size (mm) |   |   | d  | e | L  | Weight (g) | Material            | Application model |
|----------------|-----------|---|---|----|---|----|------------|---------------------|-------------------|
|                | a         | b | c |    |   |    |            |                     |                   |
| <b>NT05AJV</b> | 29        | 7 | 5 | 15 | 6 | 65 | 29         | Special alloy steel | GT-NT05 type      |
| <b>NT10AJV</b> | 35        | 9 | 6 | 17 | 7 | 82 | 63         | Special alloy steel | GT-NT10 type      |

AE

### Nipping blades for plastic

**AE/** Used for processing plastic gates such as ride gates and discard gates.

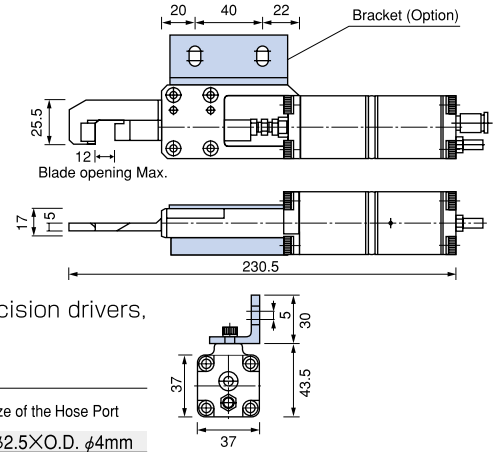
Plastic

| Model No.     | Size (mm) |   |        | d | e | L  | Weight (g) | Material            | Application model |
|---------------|-----------|---|--------|---|---|----|------------|---------------------|-------------------|
|               | a         | b | f×g    |   |   |    |            |                     |                   |
| <b>NT05AE</b> | 29        | 7 | 6×18   | 7 | 6 | 65 | 36         | Special alloy steel | GT-NT05 type      |
| <b>NT10AE</b> | 35        | 9 | 8×21.5 | 9 | 7 | 82 | 75         | Special alloy steel | GT-NT10 type      |

# Thrust-Cut Air Nipper

## GT-NK10 Thrust-Cut Air Nipper

NK



These nippers are equipped with a foot switch and are linked to high precision drivers, enabling the cutting of film-shaped gates from the thin end, preventing wrinkles around the cut.

| Capacity $\phi$ (mm)<br>ABS Plastic | Model No.      | Air Consumption<br>(cm <sup>3</sup> /str.) | Air Pressure<br>(MPa) | Weight<br>(g) | Applied Pressure<br>(N) | Spec. & Size of the Hose Port        |
|-------------------------------------|----------------|--|-----------------------|---------------|-------------------------|--------------------------------------|
| 5                                   | <b>GT-NK10</b> | 110  | 0.4~0.5               | 800           | 735                     | Hose I.D. $\phi$ 2.5XO.D. $\phi$ 4mm |

\*Hose Coupling: I.D.  $\phi$ 4 X O.D.  $\phi$ 6 mm \*Piston stroke...Max.12 mm

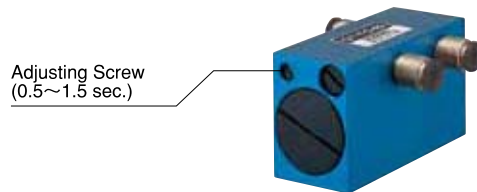
## Thrust-Cut Air Nipper blades

| Thrust-Cut Air Nipper blades |   | Plastic                        |             |            |                     |                   |
|------------------------------|---|--------------------------------|-------------|------------|---------------------|-------------------|
| <b>NK10AJ</b>                | This is a dedicated set of blades for GT-NK10. Suitable for processing of film gates attached to robot hands. |                                |             |            |                     |                   |
|                              |   |                                |             |            |                     |                   |
| Model No.                    | Size (mm)   | Shape                          | O.A.L. (mm) | Weight (g) | Material            | Application model |
| <b>NK10AJ</b>                | As above  | For metal cutting (Knife type) | 95          | 96         | Special alloy steel | <b>GT-NK10</b>    |

## Related items

### GT-TC-02 Timing Controller

TC



Connected between the compressor and the air nippers, the timing controller enables adjustments to the slide and cutting timing. (Approximately 0.5 seconds to 1.5 seconds)

Connectable nippers (Reference)

| No. GT-          | NY05 | NY10 | NY15 | NY25 | NT03 | NT05 | NT10 | NT20 | NB20 | NB30 | NB20LW | NB30LW |
|------------------|------|------|------|------|------|------|------|------|------|------|--------|--------|
| Connectable unit | 4    | 3    | 1    | 1    | 6    | 4    | 2    | 1    | 2    | 1    | 2      | 1      |

(pcs)

